

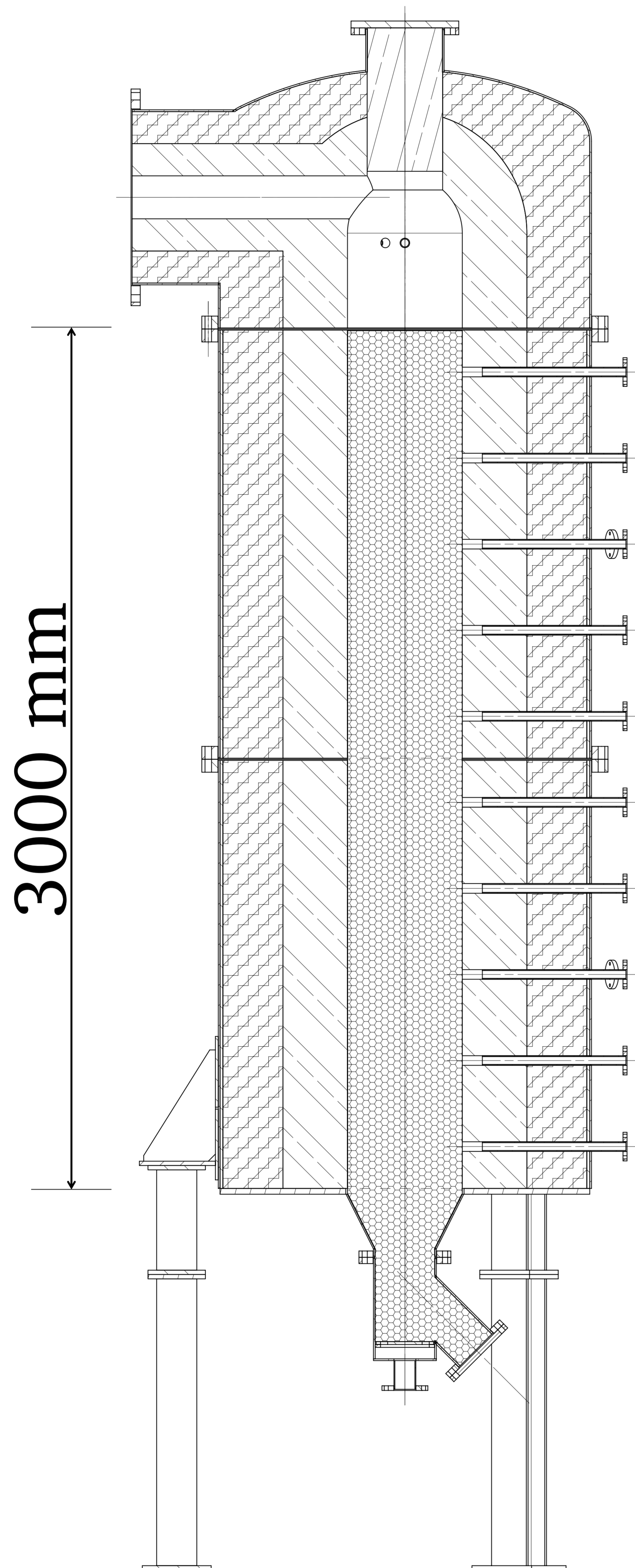
Thermal Energy Storage Pilot

Packed bed heat storage; Electrical Air Heater



TECHNISCHE
UNIVERSITÄT
DARMSTADT

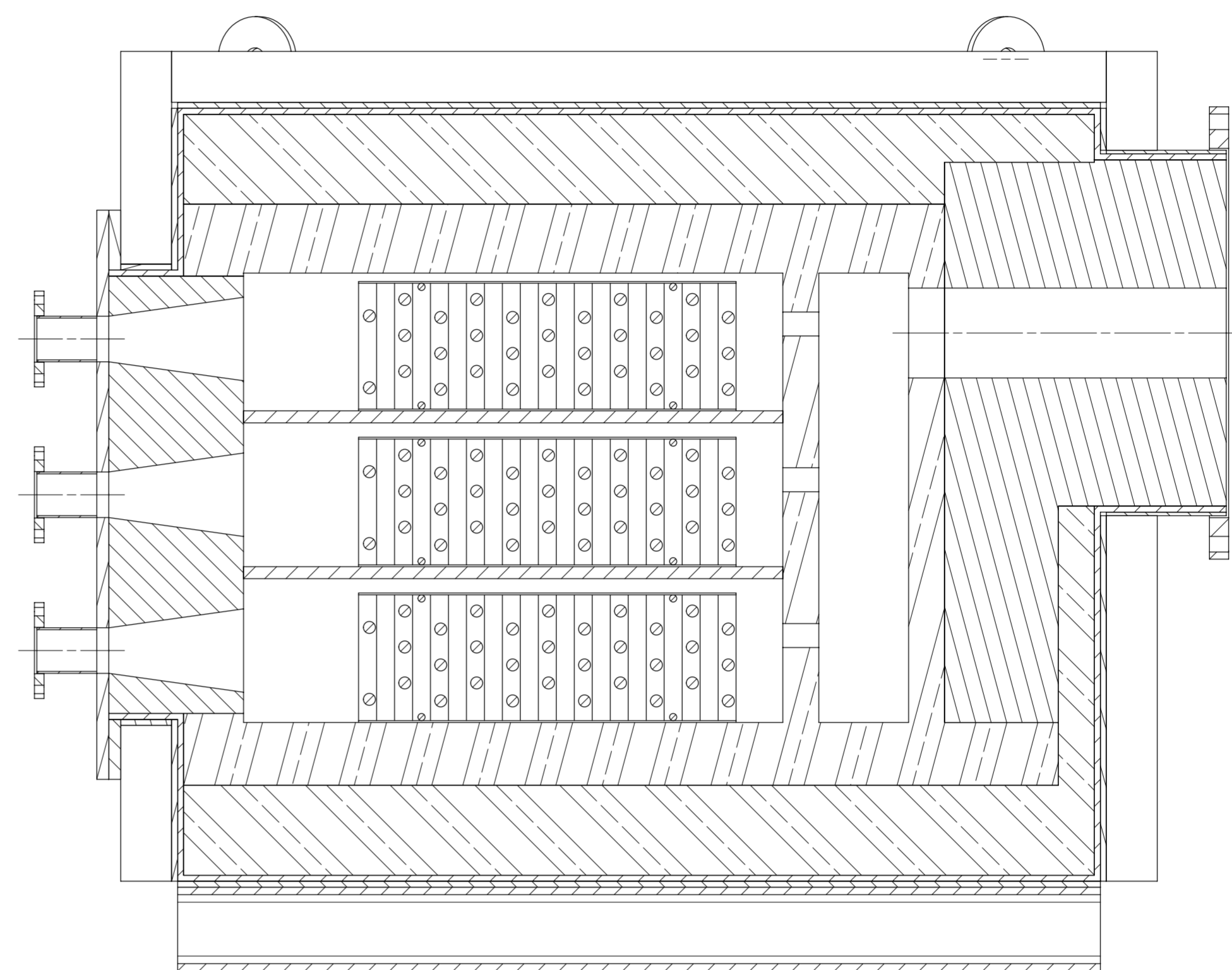
Heat Storage



carbonclean



Air Heater



Operational parameters

- Electrical power: 100 kW
- Air flow 200 m³/h
- Design temperature: 1200°C

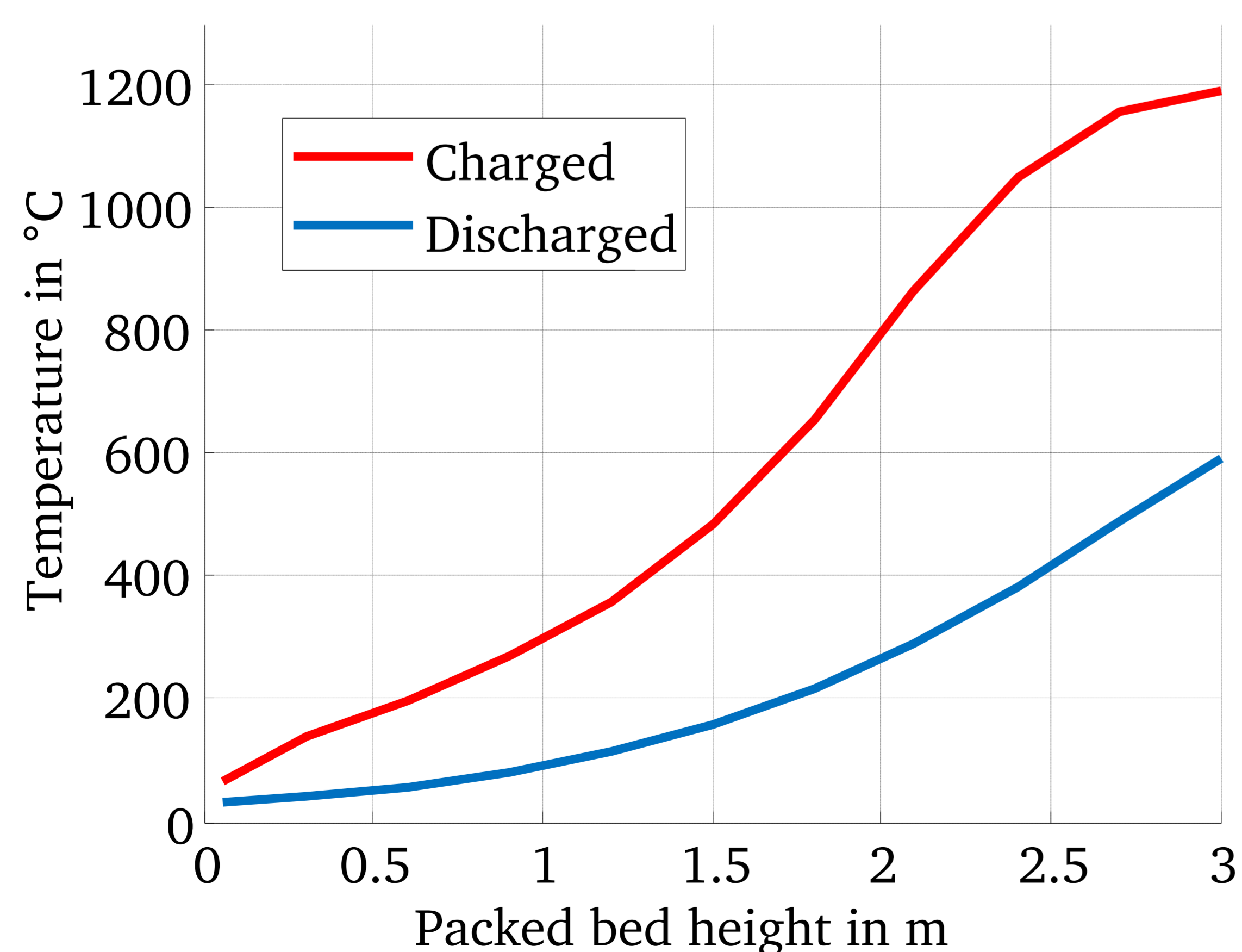
Packed Bed

- Geometry: D = 400 mm, h = 3000 mm
- Medium: Al₂O₃ spheres, 10 mm, 900 kg

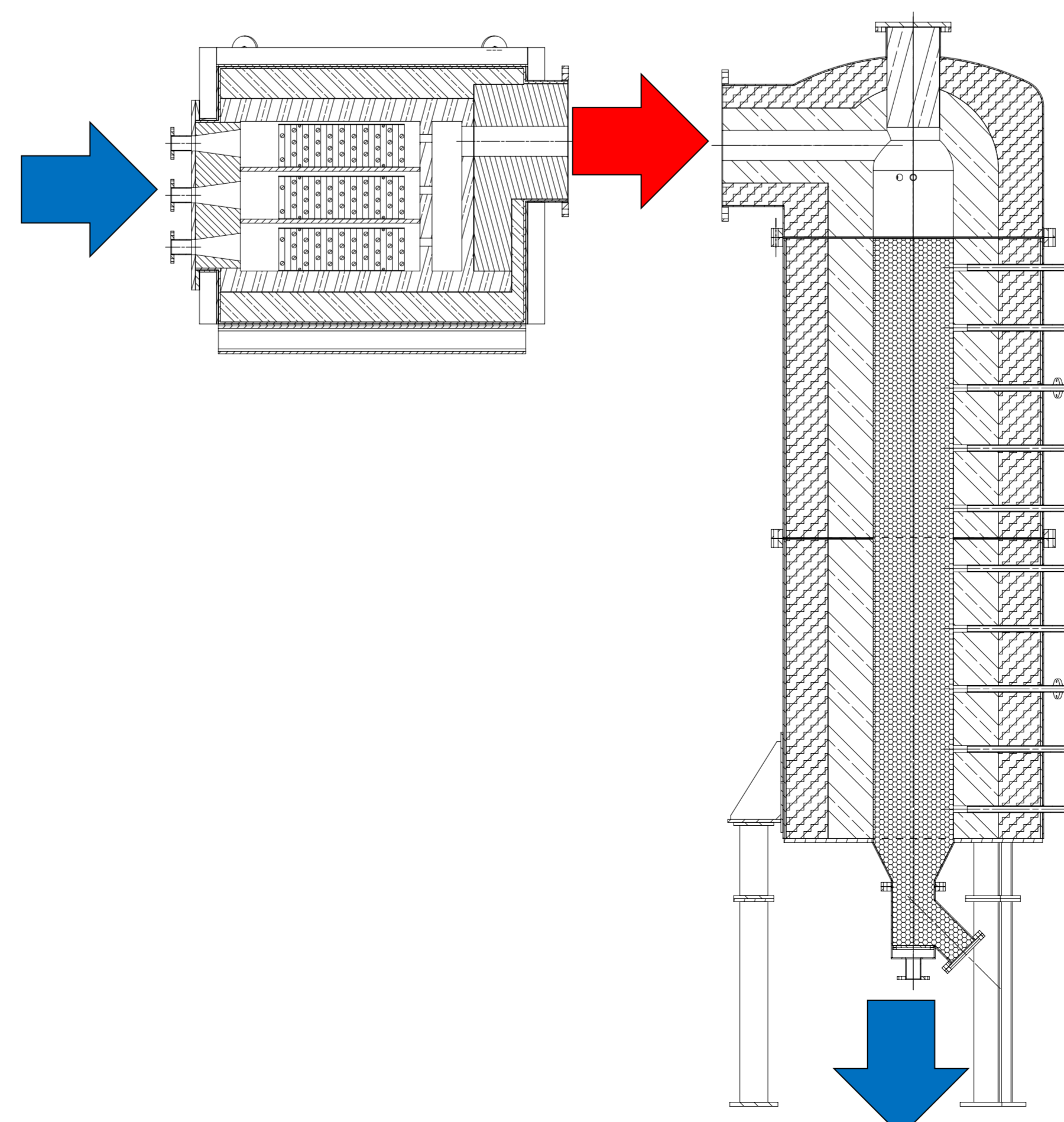
Measurements

- Temperature profile of packed bed
- Hot air temperature (suction pyrometer)
- Packed bed pressure loss

Temperature Profile



Charging



Discharging

